

# Porirua Wastewater Network Improvements

June 2021



poriruacity

Our water, our future.

# What we are doing to protect the Porirua Harbour?

- Challenges
- Wastewater network renewals & upgrades
- Porirua WWTP capacity upgrades & notification of our resource consent application
- Inspecting private laterals
- Central storage tank
- Wastewater network overflow resource consent application

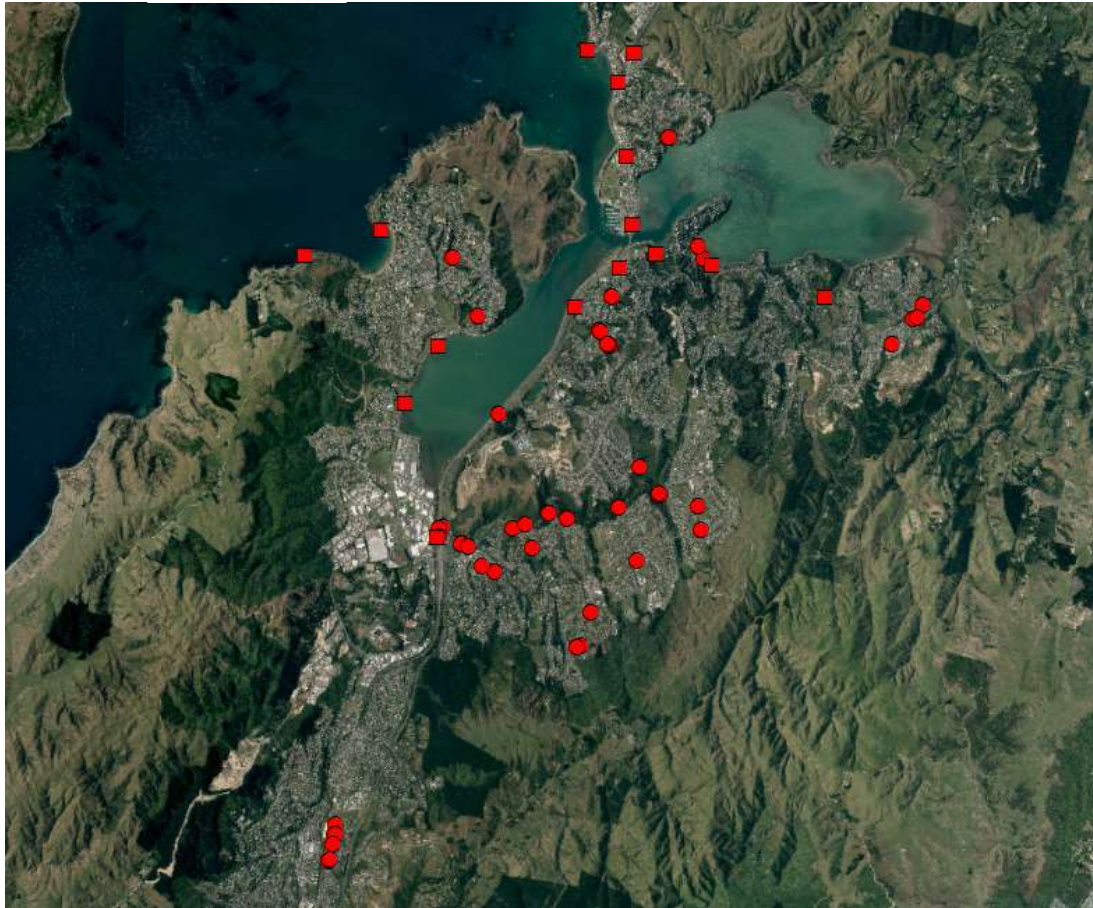



# Porirua wastewater network challenges

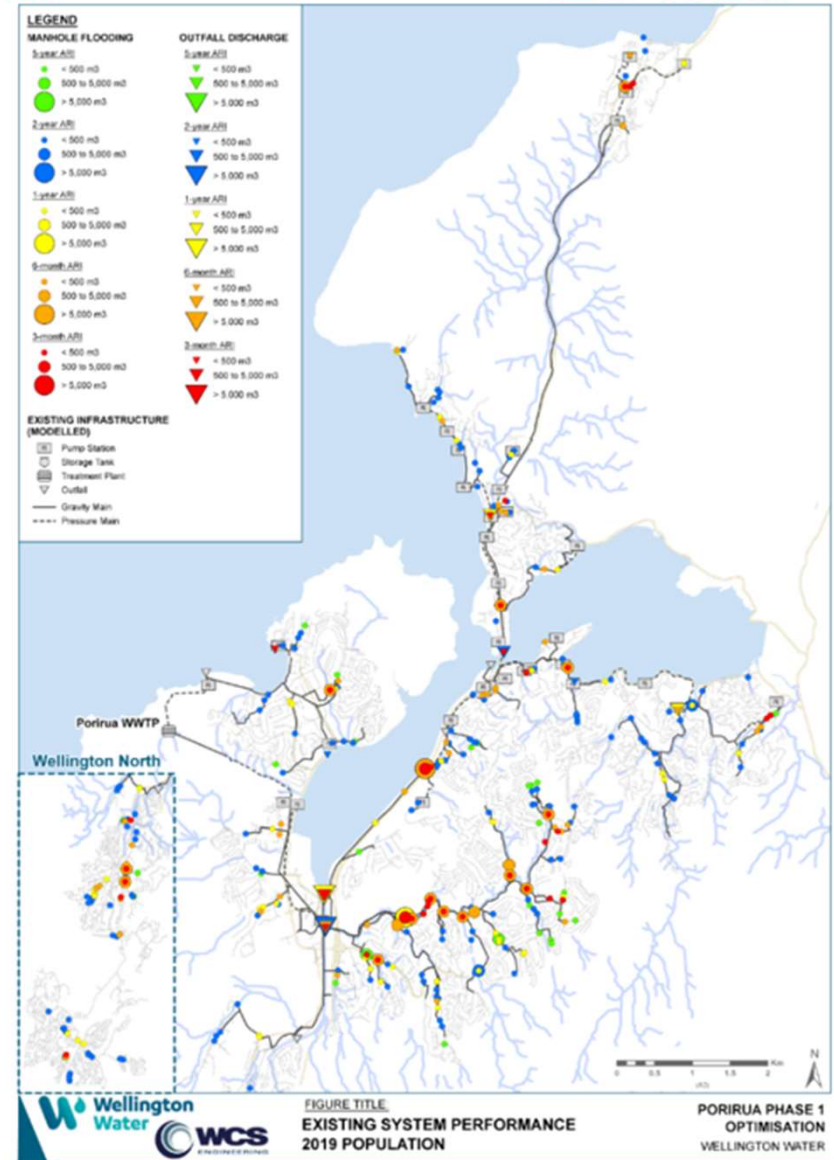
- Services Johnsonville in the south to Pukerua Bay in the north
- Wastewater overflows during wet weather
- Wastewater blockages and leaks during dry weather
- Aging network
- Growth



# Wastewater network overflows

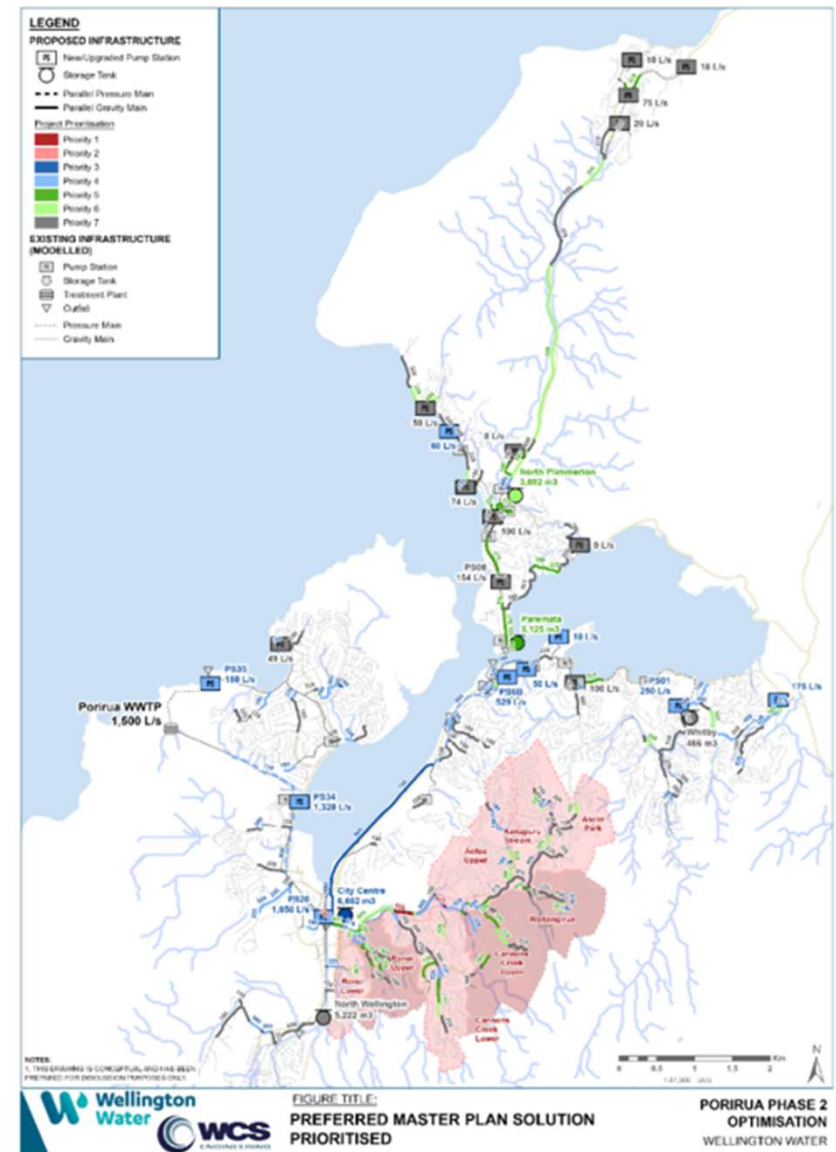


 Observed wet weather overflows



# Public wastewater network renewals & improvements

- Lining pipes in Titahi Bay
- Network overflow reduction strategy



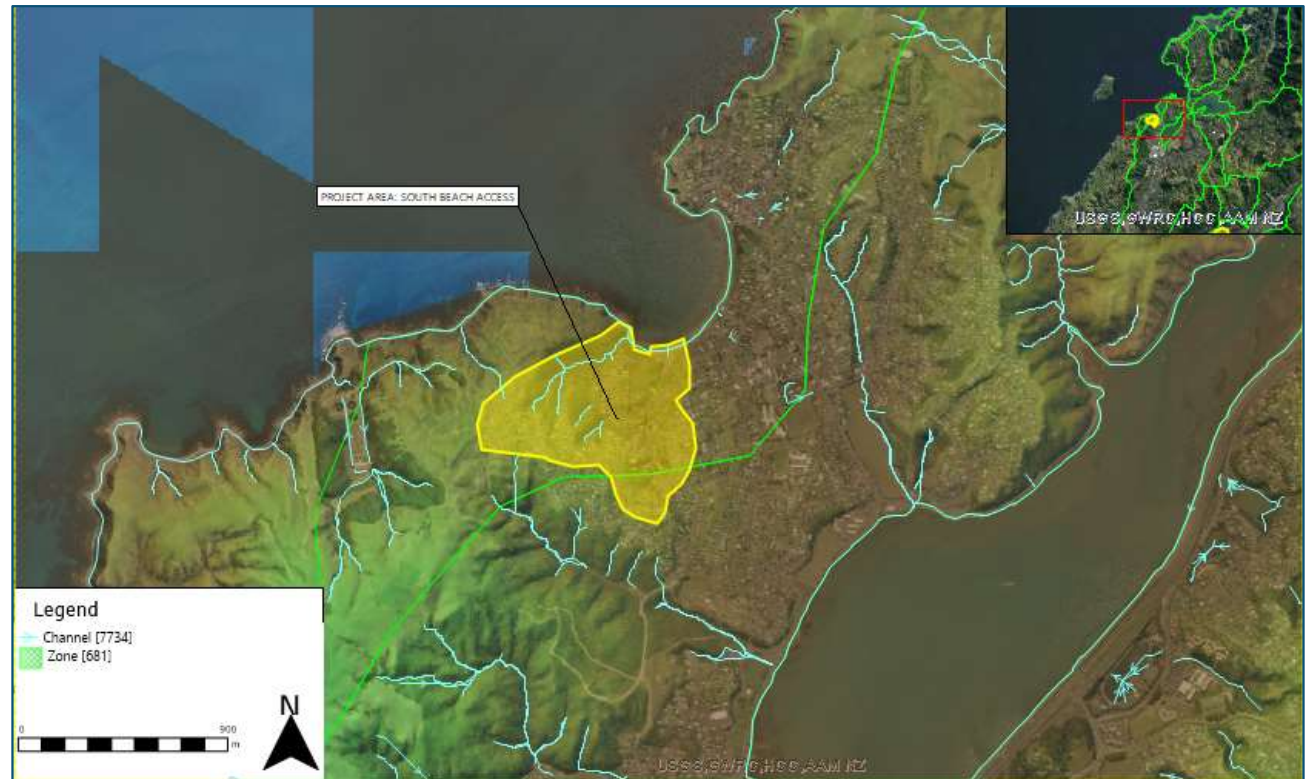
# Porirua wastewater treatment plant upgrades and consent application

- UV upgrade to increase hydraulic capacity to 1,500L/s and to provide redundancy
- Hydraulic upgrade to provide full biological treatment to 1,500L/s
- When complete in 2023, all wastewater arriving at the plant will receive full treatment
- Public submissions on our resource consent are currently being sought by Greater Wellington Regional Council



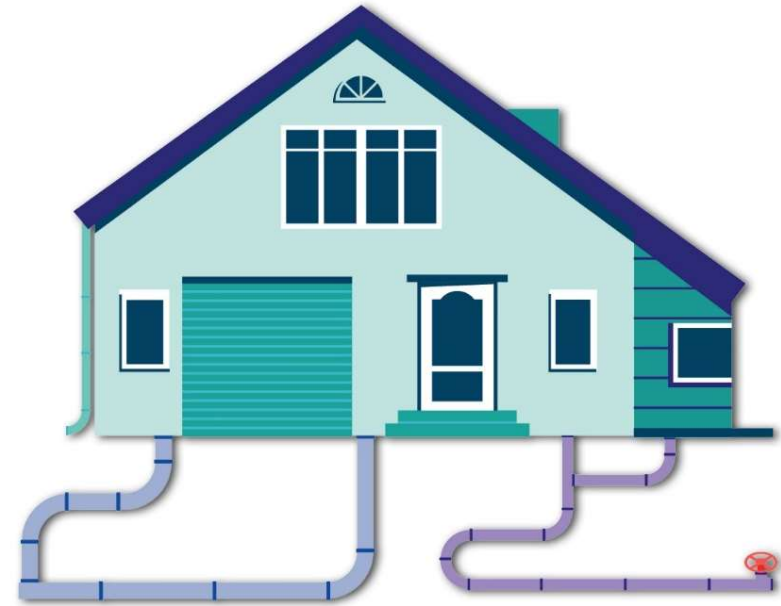
# Knowing your pipes – Private lateral inspections

- 50% of the network is in private property
- Private laterals are the property owner's responsibility
- We are currently working in the South Beach culvert catchment, Titahi Bay
- Future catchments selected by the consent monitoring results



# Knowing your pipes – what will happen?

- Water quality grab sampling
- Visual inspections
- Smoke test
- Dye test
- CCTV
- Issue letters informing property owners if there are faults
- Follow up during the repair process





# Grab sampling



# Visual inspection – stormwater to wastewater



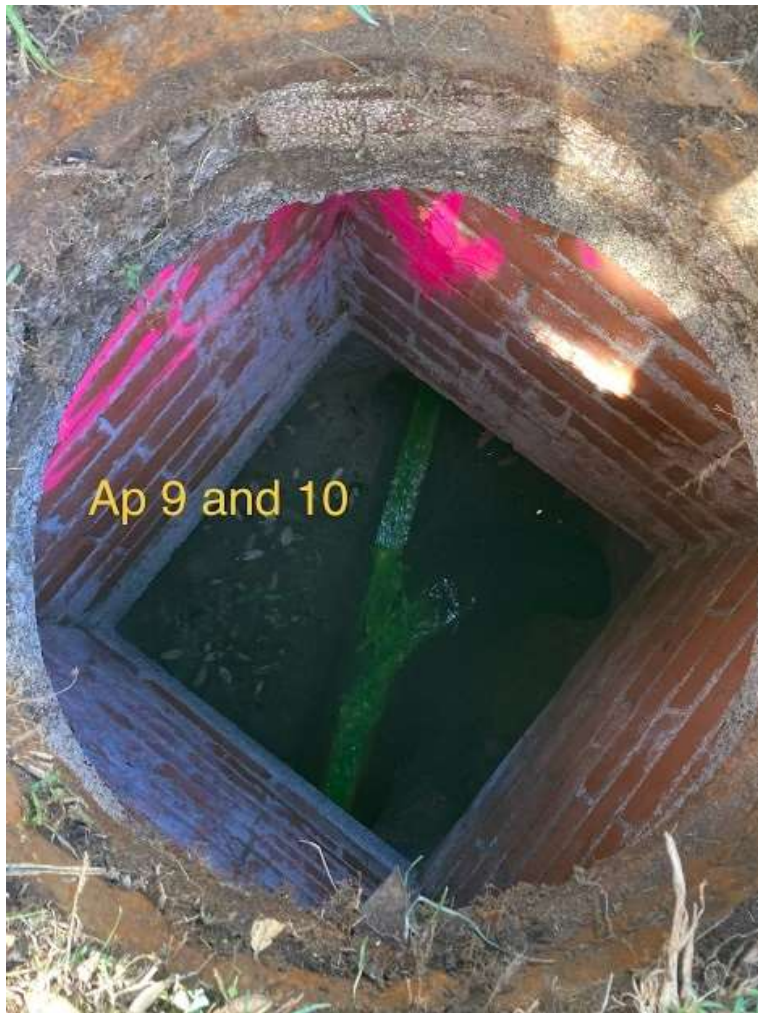
# Visual inspection – low, broken gully traps



# Smoke testing



# Dye testing



# CCTV



# Central storage tank

- Capture and hold wastewater at peak times
- Gradually release back into the network when there is capacity
- Reduce overflows into Porirua Stream
- Supports growth of Porirua East

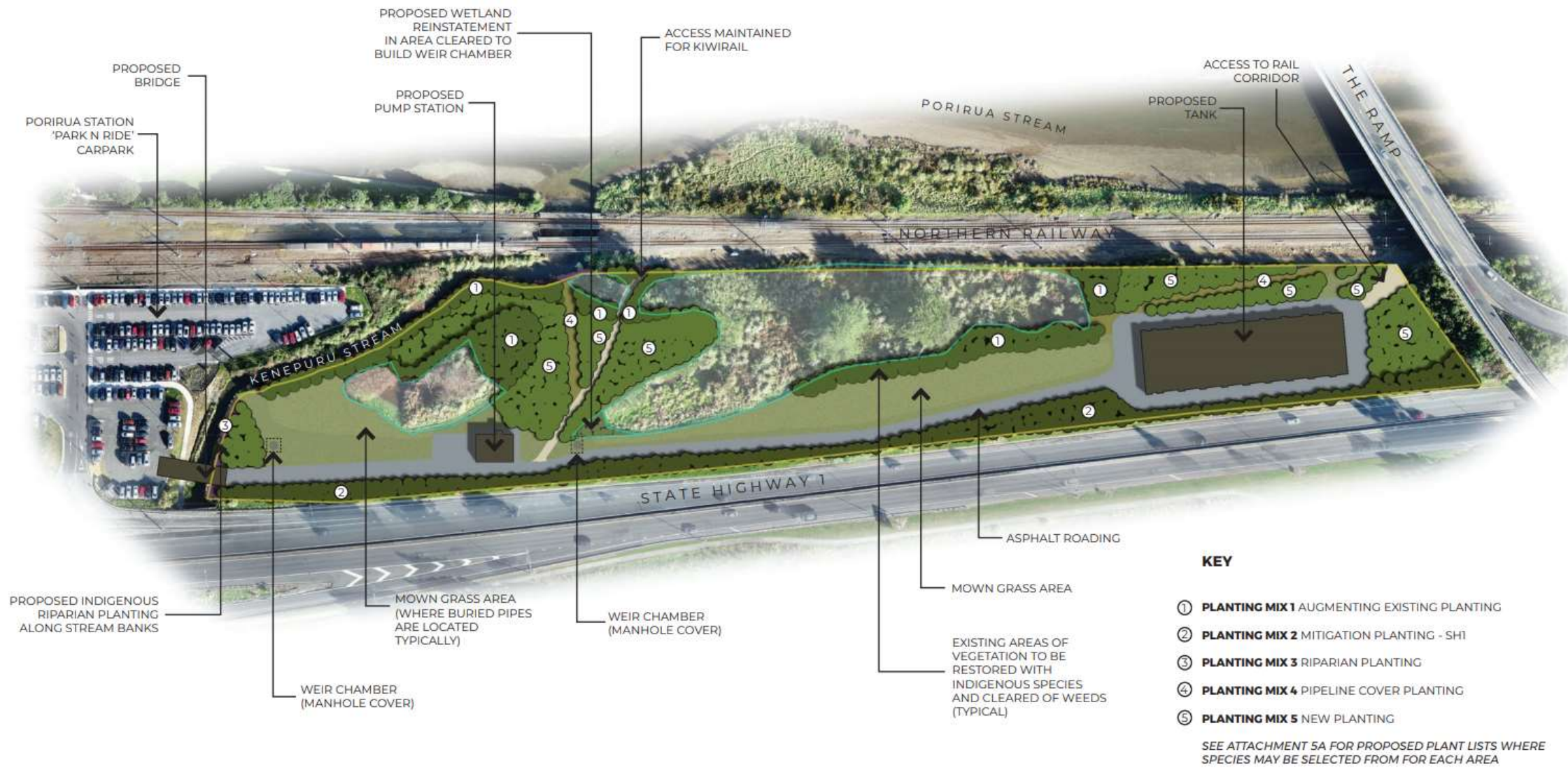


# What will it look like?





# Landscaping plan

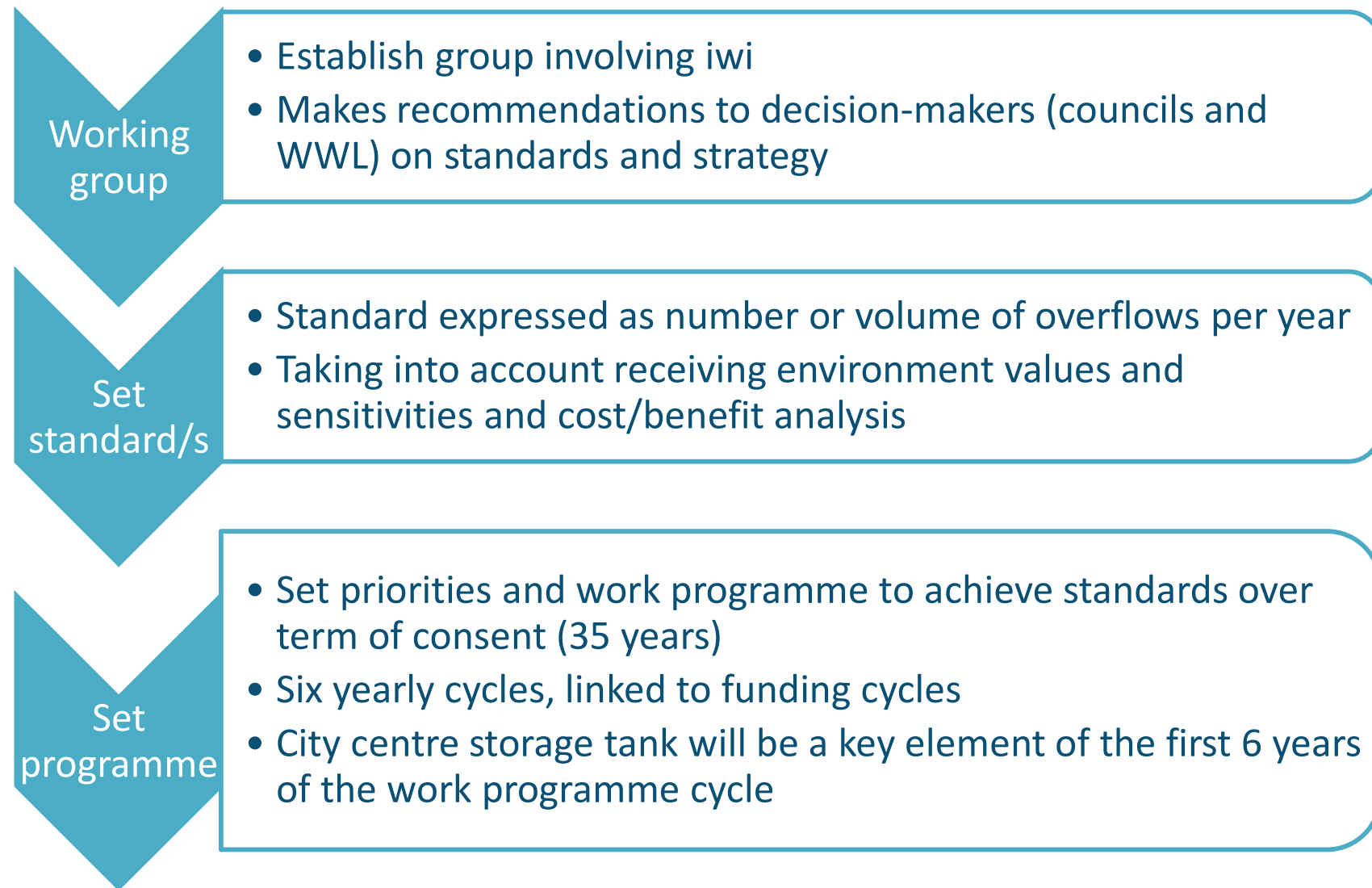


# Wastewater network overflows resource consent application

- Planning to reduce overflows long term
- Catchment-wide resource consent would provide framework for:
  - Setting standards
  - Prioritising investment in improvements



# Proposed network overflow approach



# YOU'VE SPOKEN, WE'VE HEARD

From Pukerua Bay to Newlands,  
and everywhere in between.

## Together we value...

### **Kai kete \ Food basket**

The harbour, streams and coast can be used to gather and catch kaimoana and mahinga kai for food

### **Hauora kaiao \ Ecological health**

The harbour, streams and coast are clean and brimming with life and have diverse and healthy ecosystems

### **Ka taea e te tangata \ Accessibility and recreation**

The harbour, streams and coast are safe and accessible for people to enjoy and undertake recreational activities

### **Te ara wairua o te wai \ The pathway of the spirit of the water**

The harbour, streams and coast flow naturally and with energy, attracting people to connect with them

### **Whanaketanga tauwhiro o te whenua \ Sustainable development of land**

Land is developed, used and managed sustainably, recognising its effect on water quality and quantity

### **Ohaoha o te wai \ Economic uses of water and waterways as a resource**

The use of water and waterways provides for economic opportunities and benefits

### **Ko Te Awarua-o-Porirua he taonga tuku iho a Ngāti Toa Rangatira**

Te Awarua-o-Porirua is an ancestral treasure of Ngāti Toa Rangatira