

Wellington's above ground emergency water network

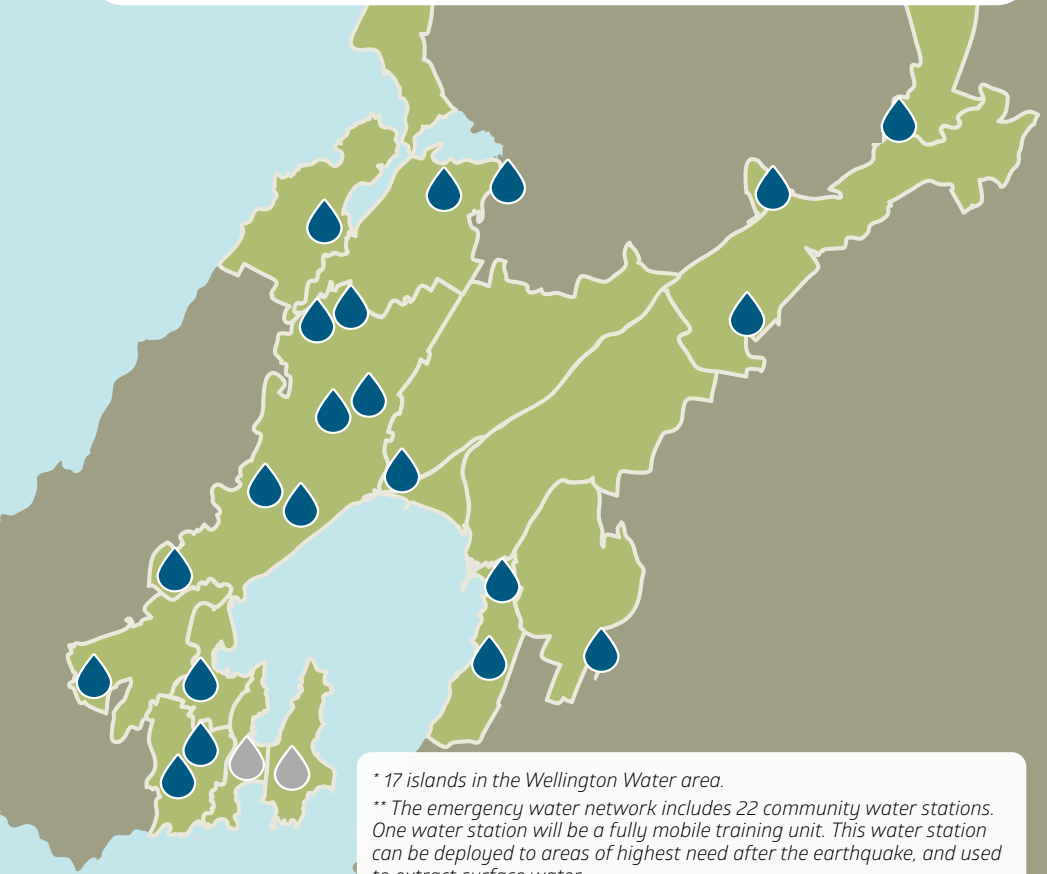
Helping to make our communities resilient



EMERGENCY RESPONSE ISLANDS

Road and transportation networks, water, wastewater, power, gas, and telecommunications will all be significantly affected in a major earthquake.

We've worked with central and local government emergency management experts to agree our approach for emergency planning. The emergency response 'island' concept recognises that after a significant earthquake communities will be isolated. Inaccessible roads, landslides, debris, and flooding will make Wellington into 'islands' that need to be totally self-sufficient.



* 17 islands in the Wellington Water area.

** The emergency water network includes 22 community water stations. One water station will be a fully mobile training unit. This water station can be deployed to areas of highest need after the earthquake, and used to extract surface water.

 Community Water Station  Desalination

ALTERNATIVE WATER SOURCES

Wellington's drinking water network is vulnerable. Some suburbs could be without water for more than 100 days after a major earthquake.

The above ground water sources won't be the only supply of emergency water. Water within existing reservoirs at the time of the earthquake can also be used.

Where will the water come from?

Rivers and streams
Twelve sites will take water from local rivers and streams

Bores
Nine new groundwater bores where streams aren't available

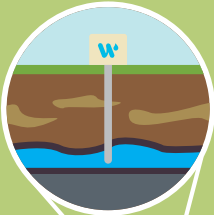
Desalination
Units will be transported into areas without access to other water sources



Streams



Desalination



Bores

SAFE AND RELIABLE EMERGENCY WATER

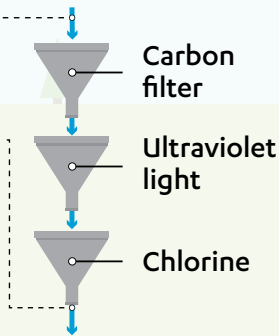
Once the water has been extracted from a bore, stream and/or river it passes through a community water station, where it is treated and made safe.



A water treatment plant . . . in a box!

Extracted water from bore or stream/river

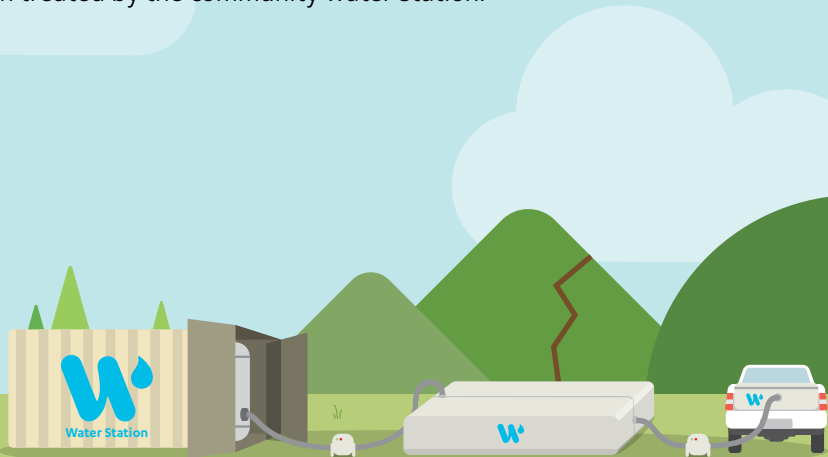
The water supplied from community water stations is treated to NZ Drinking Water Standards.



ON-SITE RESERVOIR

Each community water station will have a 20,000 litre emergency water bladder. Some sites will have two, depending on the size of the community.

These giant bladders act as a reservoir, and are filled with safe water once it has been treated by the community water station.



20,000 litre reservoirs are used to fill smaller transportable bladders.

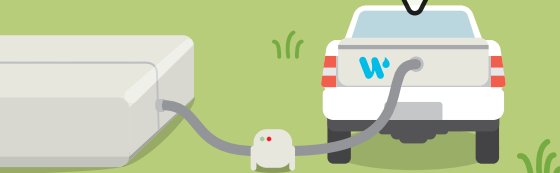


TRANSPORTING WATER: PIPES ON WHEELS

Underground water supply pipes won't stand up to the force of a major quake. We estimate around 75 per cent of the 2,000 kilometres of buried pipes will be damaged.



Smaller transportable bladders will be filled from the on-site reservoirs




Utes, trailers, and vans will be the 'pipes' in the emergency water network




COMMUNITY: COLLECTION POINTS

Water collection points will be set up in locations like schools, parks, and roadsides.

The aim is to make water collection points easily accessible from every home. Locations will be advised through official information channels following the emergency.



We're working with councils to develop the distribution approach



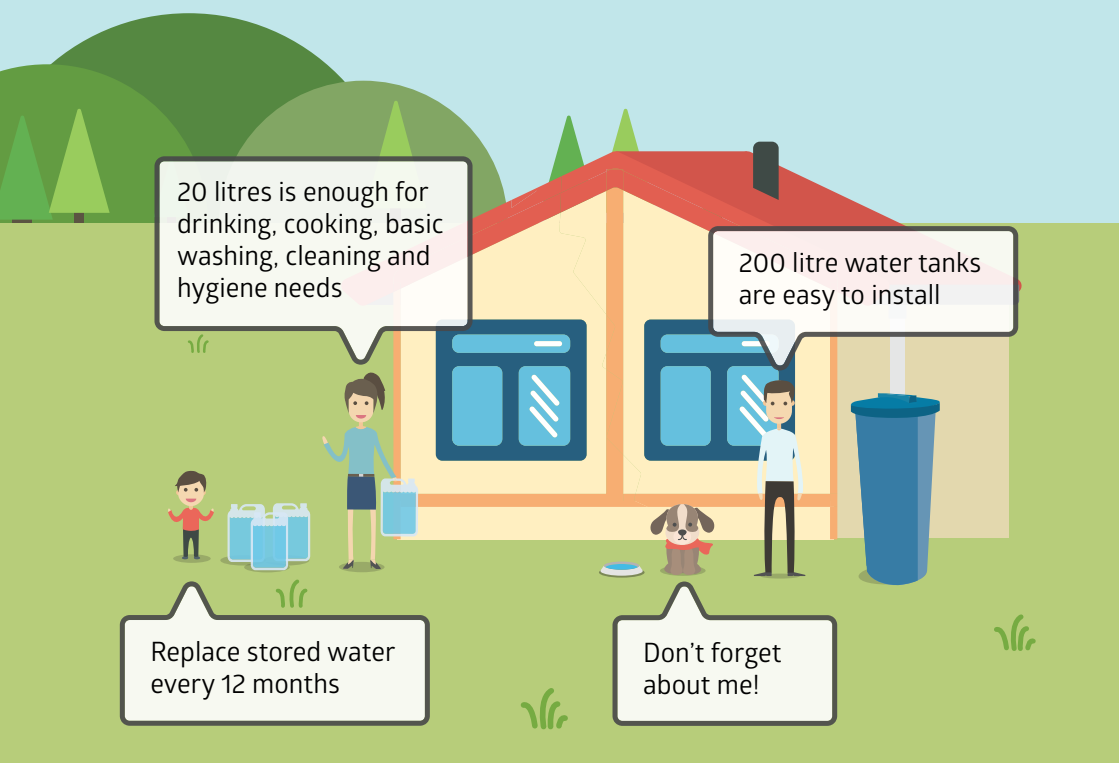
**Communities that
work together do
better in emergencies**

HOUSEHOLD: STORE WATER NOW!

Following a major earthquake, the first thing people rely on is themselves and their families — storing water is a must for every household.

You should have 20 litres of stored water for every person, every day — for at least seven days. That's 560 litres for a four-person household.

You may need to store more if you have unwell people, or small children in your home.



20 litres is enough for drinking, cooking, basic washing, cleaning and hygiene needs

200 litre water tanks are easy to install

Replace stored water every 12 months

Don't forget about me!

**Find out more about
emergency water**

wellingtonwater.co.nz | (04) 912 4400

Wellington Water is owned by the Hutt, Porirua, Upper Hutt and Wellington city councils and Greater Wellington Regional Council.

We manage their drinking water, wastewater and stormwater services.