

Friday 6 October 2023

**OIA IRO-497**

Name: [REDACTED]

Email: [REDACTED]@hotmail.com

Kia ora [REDACTED]

**Official information request regarding sewerage/wastewater pipe replacement details.**

Thank you for your request dated Monday 2 October 2023.

We have considered your request in accordance with the Local Government Official Information and Meetings Act 1987 (the Act) and determined that we are able to grant your request in part.

Please see information on the as built records in turn.

The as built records, dated July 2011/2012 show the following:

- The wastewater pipe running under #15 Kio Road was not upgraded to PE100 (HDPE);
- The stormwater pipe running under #15 Kio Road was re-laid around the building (house) using PE100 pipe. The section under the building was abandoned; and
- The only the section of wastewater pipe running through the neighbouring property – #9 Kio Road – was replaced with PE100 pipe.

We have also attached in our email to you the built plan for reference. Pursuant to [Section 7\(2\)\(a\)](#) of the Act, some information has been withheld as it is personal about private individuals.

You have the right to seek an investigation and review by the Ombudsman of this decision. Information about how to make a complaint is available at [www.ombudsman.parliament.nz](http://www.ombudsman.parliament.nz) or freephone 0800 802 602.

Ngā mihi,

[REDACTED]

**Group Manager, Customer Operation Group**

For the latest news and updates, follow us on our social channels:

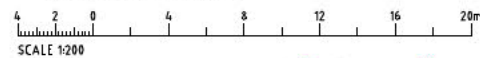
 /wellingtonwater  @wgtwaternz & @wgtwateroutage  @wellington\_water

[www.wellingtonwater.co.nz](http://www.wellingtonwater.co.nz)

**Our water, our future.**

NOTES:

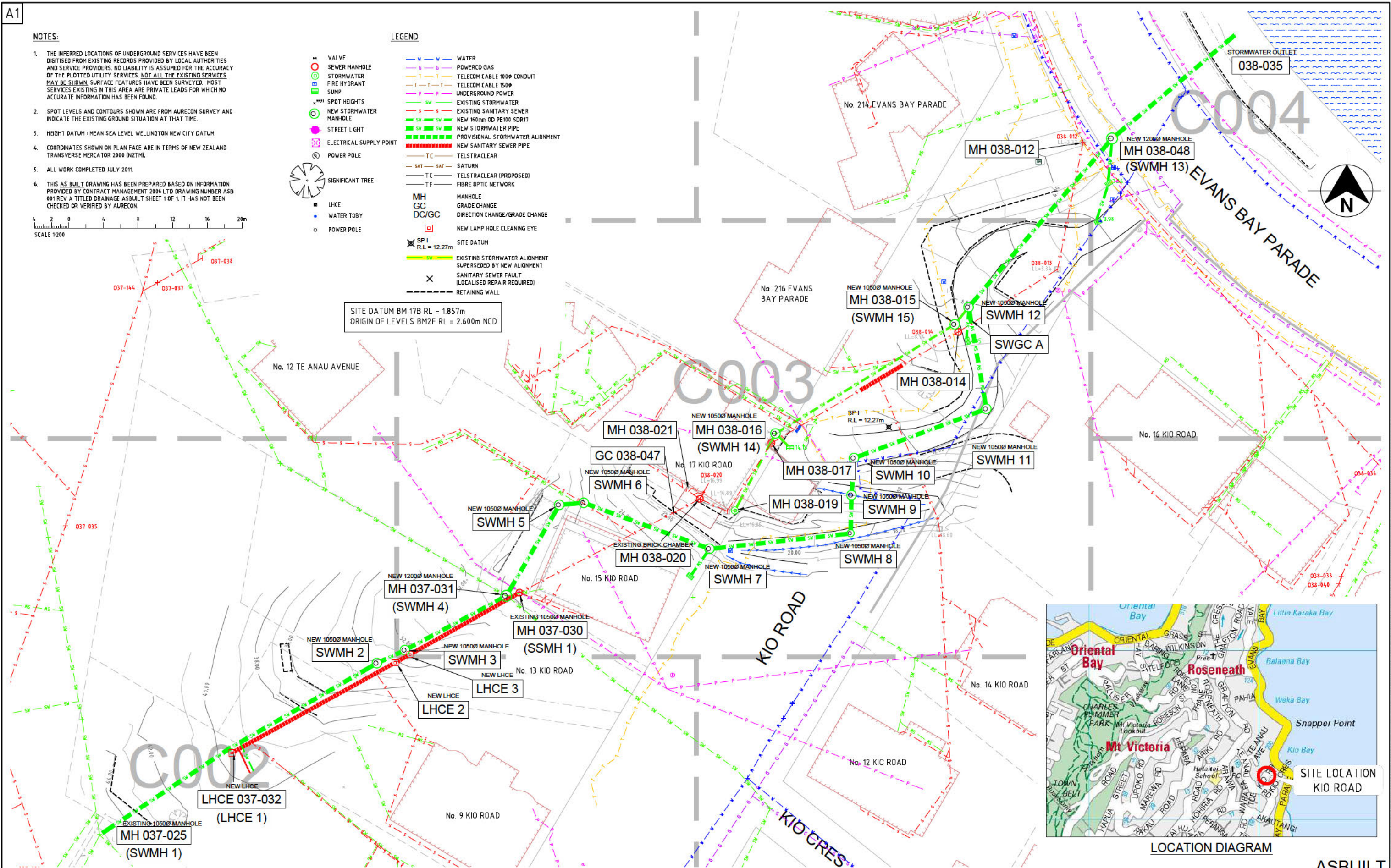
1. THE INFERRED LOCATIONS OF UNDERGROUND SERVICES HAVE BEEN DIGITISED FROM EXISTING RECORDS PROVIDED BY LOCAL AUTHORITIES AND SERVICE PROVIDERS. NO LIABILITY IS ASSUMED FOR THE ACCURACY OF THE PLOTTED UTILITY SERVICES. NOT ALL THE EXISTING SERVICES MAY BE SHOWN. SURFACE FEATURES HAVE BEEN SURVEYED. MOST SERVICES EXISTING IN THIS AREA ARE PRIVATE LEADS FOR WHICH NO ACCURATE INFORMATION HAS BEEN FOUND.
2. SPOT LEVELS AND CONTOURS SHOWN ARE FROM AURECON SURVEY AND INDICATE THE EXISTING GROUND SITUATION AT THAT TIME.
3. HEIGHT DATUM: MEAN SEA LEVEL WELLINGTON NEW CITY DATUM.
4. COORDINATES SHOWN ON PLAN FACE ARE IN TERMS OF NEW ZEALAND TRANSVERSE MERCATOR 2000 (NZTM).
5. ALL WORK COMPLETED JULY 2011.
6. THIS AS BUILT DRAWING HAS BEEN PREPARED BASED ON INFORMATION PROVIDED BY CONTRACT MANAGEMENT 2006 LTD DRAWING NUMBER ASB 001 REV A TITLED DRAINAGE ASBUILT SHEET 1 OF 1. IT HAS NOT BEEN CHECKED OR VERIFIED BY AURECON.



LEGEND

- VALVE
- SEWER MANHOLE
- STORMWATER
- FIRE HYDRANT
- SUMP
- SPOT HEIGHTS
- NEW STORMWATER MANHOLE
- STREET LIGHT
- ELECTRICAL SUPPLY POINT
- POWER POLE
- SIGNIFICANT TREE
- LHCE
- WATER TOWER
- POWER POLE
- WATER
- POWER/GAS
- TELECOM CABLE 100# CONDUIT
- TELECOM CABLE 150#
- UNDERGROUND POWER
- EXISTING STORMWATER
- EXISTING SANITARY SEWER
- NEW 160mm DD PE100 SDR17
- NEW STORMWATER PIPE
- PROVISIONAL STORMWATER ALIGNMENT
- NEW SANITARY SEWER PIPE
- TELSTRACLEAR
- SATURN
- TELSTRACLEAR (PROPOSED)
- FIBRE OPTIC NETWORK
- MANHOLE
- GRADE CHANGE
- DIRECTION CHANGE/GRADE CHANGE
- NEW LAMP HOLE CLEANING EYE
- SITE DATUM
- EXISTING STORMWATER ALIGNMENT SUPERSEDED BY NEW ALIGNMENT
- SANITARY SEWER FAULT (LOCALISED REPAIR REQUIRED)
- RETAINING WALL

SITE DATUM BM 17B RL = 1857m  
ORIGIN OF LEVELS BM2F RL = 2.600m NCD



Rev.	Date	Revision Details	By	Ver.	App.
B	20.01.12	ISSUE FOR ASBUILT PURPOSES			
A	05.04.11	ISSUE FOR CONSTRUCTION			

**aurecon**  
Aurecon New Zealand Limited  
Old Bank Chambers  
102 Customhouse Quay (PO Box 1591)  
Wellington New Zealand  
Telephone +64 4 472 9589  
Facsimile +64 4 472 9922  
Email wellington@ap.aurecongroup.com

A person using Aurecon drawings and other data accepts the risk of:  
1. using the drawings and other data in electronic form without requesting and checking them for accuracy against the original hard copy version;  
2. using the drawings or other data for any purpose not agreed to in writing by Aurecon.

Client: **Absolutely POSITIVELY Wellington**  
Wellington City Council

Project: **KIO ROAD STORMWATER AND SEWER RELAY**

Date: 05.04.11

Drawing Title: **NEW STORMWATER AND SEWER ALIGNMENT SHEET 1 OF 4**

CW Project No. **206283**  
Scale: 1:200 @ A1, 1:400 @ A3  
Drawing No. **C-001**  
Rev. **B**

A1

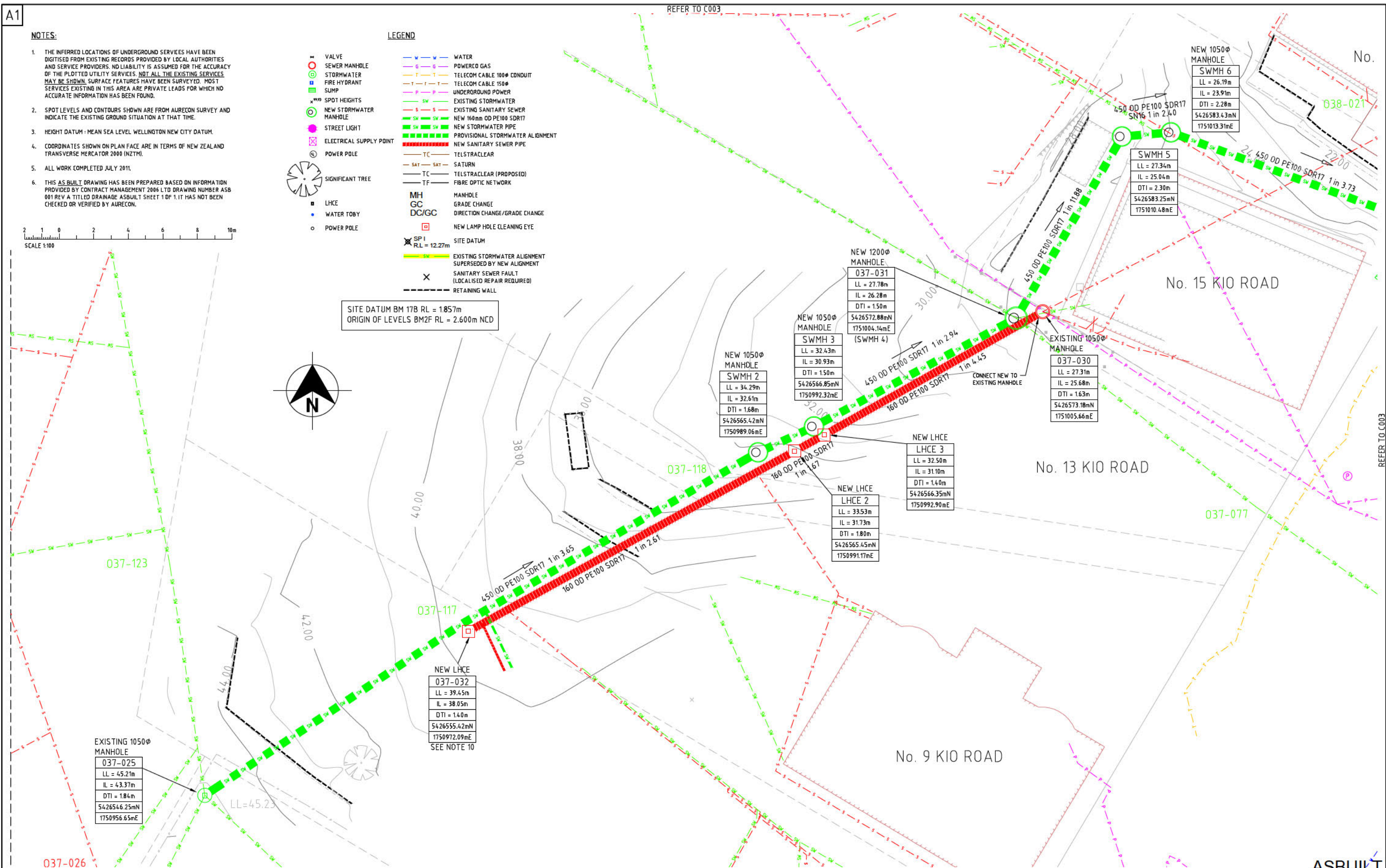
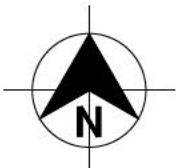
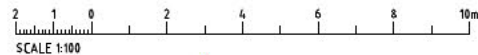
NOTES:

1. THE INFERRED LOCATIONS OF UNDERGROUND SERVICES HAVE BEEN DIGITISED FROM EXISTING RECORDS PROVIDED BY LOCAL AUTHORITIES AND SERVICE PROVIDERS. NO LIABILITY IS ASSUMED FOR THE ACCURACY OF THE PLOTTED UTILITY SERVICES. NOT ALL THE EXISTING SERVICES MAY BE SHOWN. SURFACE FEATURES HAVE BEEN SURVEYED. MOST SERVICES EXISTING IN THIS AREA ARE PRIVATE LEADS FOR WHICH NO ACCURATE INFORMATION HAS BEEN FOUND.
2. SPOT LEVELS AND CONTOURS SHOWN ARE FROM AURECON SURVEY AND INDICATE THE EXISTING GROUND SITUATION AT THAT TIME.
3. HEIGHT DATUM: MEAN SEA LEVEL WELLINGTON NEW CITY DATUM.
4. COORDINATES SHOWN ON PLAN FACE ARE IN TERMS OF NEW ZEALAND TRANSVERSE MERCATOR 2000 (NZTM).
5. ALL WORK COMPLETED JULY 2011.
6. THIS AS BUILT DRAWING HAS BEEN PREPARED BASED ON INFORMATION PROVIDED BY CONTRACT MANAGEMENT 2006 LTD DRAWING NUMBER ASB 001 REV A TITLED DRAINAGE ASBUILT SHEET 1 OF 1. IT HAS NOT BEEN CHECKED OR VERIFIED BY AURECON.

LEGEND

<ul style="list-style-type: none"> <li>VALVE</li> <li>SEWER MANHOLE</li> <li>STORMWATER MANHOLE</li> <li>FIRE HYDRANT</li> <li>SUMP</li> <li>SPOT HEIGHTS</li> <li>NEW STORMWATER MANHOLE</li> <li>STREET LIGHT</li> <li>ELECTRICAL SUPPLY POINT</li> <li>POWER POLE</li> <li>SIGNIFICANT TREE</li> <li>LHCE</li> <li>WATER TOBY</li> <li>POWER POLE</li> </ul>	<ul style="list-style-type: none"> <li>WATER</li> <li>POWER/GAS</li> <li>TELECOM CABLE 100# CONDUIT</li> <li>TELECOM CABLE 150#</li> <li>UNDERGROUND POWER</li> <li>EXISTING STORMWATER</li> <li>EXISTING SANITARY SEWER</li> <li>NEW 160mm OD PE100 SDR17</li> <li>NEW STORMWATER PIPE</li> <li>PROVISIONAL STORMWATER ALIGNMENT</li> <li>NEW SANITARY SEWER PIPE</li> <li>TELSTRACLEAR</li> <li>SATURN</li> <li>TELSTRACLEAR (PROPOSED)</li> <li>FIBRE OPTIC NETWORK</li> <li>MANHOLE</li> <li>GRADE CHANGE</li> <li>DIRECTION CHANGE/GRADE CHANGE</li> <li>NEW LAMP HOLE CLEANING EYE</li> <li>SITE DATUM</li> <li>EXISTING STORMWATER ALIGNMENT SUPERSEDED BY NEW ALIGNMENT</li> <li>SANITARY SEWER FAULT (LOCALISED REPAIR REQUIRED)</li> <li>RETAINING WALL</li> </ul>
---	--

SITE DATUM BM 17B RL = 1.857m  
ORIGIN OF LEVELS BM2F RL = 2.600m NCD



EXISTING 1050# MANHOLE  
037-025  
LL = 45.21m  
IL = 43.37m  
DTI = 1.84m  
5426546.25mN  
1750956.65mE

NEW LHCE  
037-032  
LL = 39.45m  
IL = 38.05m  
DTI = 1.40m  
5426555.42mN  
1750972.09mE  
SEE NOTE 10

NEW 1050# MANHOLE  
SWMH 2  
LL = 34.29m  
IL = 32.61m  
DTI = 1.68m  
5426565.42mN  
1750989.06mE

NEW 1050# MANHOLE  
SWMH 3  
LL = 32.43m  
IL = 30.93m  
DTI = 1.50m  
5426572.88mN  
1751004.14mE  
(SWMH 4)

NEW LHCE  
LHCE 3  
LL = 32.50m  
IL = 31.10m  
DTI = 1.40m  
5426566.35mN  
1750992.90mE

NEW LHCE  
LHCE 2  
LL = 33.53m  
IL = 31.73m  
DTI = 1.80m  
5426565.45mN  
1750991.17mE

EXISTING 1050# MANHOLE  
037-030  
LL = 27.31m  
IL = 25.68m  
DTI = 1.63m  
5426573.18mN  
1751005.66mE

NEW 1200# MANHOLE  
SWMH 5  
LL = 27.34m  
IL = 25.04m  
DTI = 2.30m  
5426583.25mN  
1751010.48mE

NEW 1050# MANHOLE  
SWMH 6  
LL = 26.19m  
IL = 23.91m  
DTI = 2.28m  
5426583.43mN  
1751013.31mE

Rev.	Date	Revision Details	By	Ver.	App.
B	20.01.12	ISSUE FOR ASBUILT PURPOSES			
A	05.04.11	ISSUE FOR CONSTRUCTION			

**aurecon**  
Aurecon New Zealand Limited  
Old Bank Chambers  
102 Customhouse Quay (PO Box 1501)  
Wellington New Zealand  
Telephone +64 4 472 9589  
Facsimile +64 4 472 9922  
Email wellington@ap.aurecongroup.com

A person using Aurecon drawings and other data accepts the risk of:  
1. using the drawings and other data in electronic form without requesting and checking them for accuracy against the original hard copy version;  
2. using the drawings or other data for any purpose not agreed to in writing by Aurecon.

Client: **Absolutely POSITIVELY**  
ME HIKI KI PŌNEKE  
WELLINGTON CITY COUNCIL  
**Wellington**

Project: **KIO ROAD  
STORMWATER AND SEWER RELAY**

Date	05.04.11
Date	05.04.11
Date	05.04.11
Date	05.04.11
Date	05.04.11

Drawing Title: **NEW STORMWATER AND SEWER ALIGNMENT  
SHEET 2 OF 4**

CW Project No.	206283
Scale	1:100 @ A1 1:200 @ A3
Drawing No.	C-002
Rev.	B

REFER TO C003

NOTES:

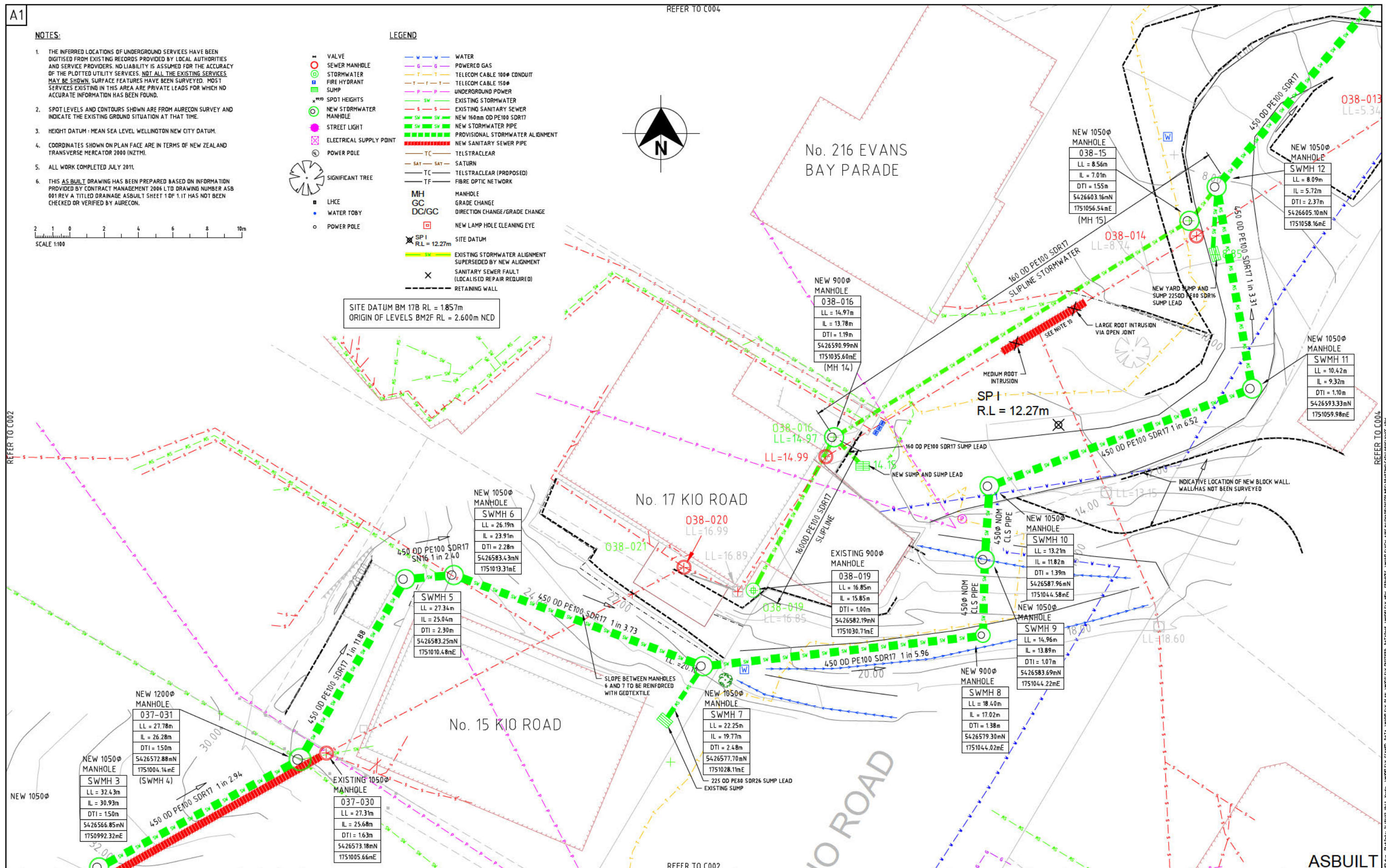
1. THE INFERRED LOCATIONS OF UNDERGROUND SERVICES HAVE BEEN DIGITISED FROM EXISTING RECORDS PROVIDED BY LOCAL AUTHORITIES AND SERVICE PROVIDERS. NO LIABILITY IS ASSUMED FOR THE ACCURACY OF THE PLOTTED UTILITY SERVICES. NOT ALL THE EXISTING SERVICES MAY BE SHOWN. SURFACE FEATURES HAVE BEEN SURVEYED. MOST SERVICES EXISTING IN THIS AREA ARE PRIVATE LEADS FOR WHICH NO ACCURATE INFORMATION HAS BEEN FOUND.
2. SPOT LEVELS AND CONTOURS SHOWN ARE FROM AURECON SURVEY AND INDICATE THE EXISTING GROUND SITUATION AT THAT TIME.
3. HEIGHT DATUM: MEAN SEA LEVEL WELLINGTON NEW CITY DATUM.
4. COORDINATES SHOWN ON PLAN FACE ARE IN TERMS OF NEW ZEALAND TRANSVERSE MERCATOR 2000 (NZTM).
5. ALL WORK COMPLETED JULY 2011.
6. THIS AS BUILT DRAWING HAS BEEN PREPARED BASED ON INFORMATION PROVIDED BY CONTRACT MANAGEMENT 2006 LTD DRAWING NUMBER ASB 001 REV A TITLED DRAINAGE ASBUILT SHEET 1 OF 1. IT HAS NOT BEEN CHECKED OR VERIFIED BY AURECON.

LEGEND

<ul style="list-style-type: none"> <li>VALVE</li> <li>SEWER MANHOLE</li> <li>STORMWATER</li> <li>FIRE HYDRANT</li> <li>SUMP</li> <li>SPOT HEIGHTS</li> <li>NEW STORMWATER MANHOLE</li> <li>STREET LIGHT</li> <li>ELECTRICAL SUPPLY POINT</li> <li>POWER POLE</li> <li>SIGNIFICANT TREE</li> <li>LHCE</li> <li>WATER TOBY</li> <li>POWER POLE</li> </ul>	<ul style="list-style-type: none"> <li>WATER</li> <li>POWER/GAS</li> <li>TELECOM CABLE 100# CONDUIT</li> <li>TELECOM CABLE 150#</li> <li>UNDERGROUND POWER</li> <li>EXISTING STORMWATER</li> <li>EXISTING SANITARY SEWER</li> <li>NEW 160mm OD PE100 SDR17</li> <li>NEW STORMWATER PIPE</li> <li>PROVISIONAL STORMWATER ALIGNMENT</li> <li>NEW SANITARY SEWER PIPE</li> <li>TELSTRACLEAR</li> <li>SATURN</li> <li>TELSTRACLEAR (PROPOSED)</li> <li>FIBRE OPTIC NETWORK</li> <li>MANHOLE</li> <li>GRADE CHANGE</li> <li>DIRECTION CHANGE/GRADE CHANGE</li> <li>NEW LAMP HOLE CLEANING EYE</li> <li>SITE DATUM</li> <li>EXISTING STORMWATER ALIGNMENT SUPERSEDED BY NEW ALIGNMENT</li> <li>SANITARY SEWER FAULT (LOCALISED REPAIR REQUIRED)</li> <li>RETAINING WALL</li> </ul>
---	--



SITE DATUM BM 17B RL = 185.7m  
ORIGIN OF LEVELS BM2F RL = 2.600m NCD



REFER TO C002

REFER TO C004

Rev.	Date	Revision Details	By	Ver.	App.
B	20.01.12	ISSUE FOR ASBUILT PURPOSES			
A	05.04.11	ISSUE FOR CONSTRUCTION			

**aurecon**  
Aurecon New Zealand Limited  
Old Bank Chambers  
102 Customhouse Quay (PO Box 1591)  
Wellington New Zealand  
Telephone +64 4 472 9589  
Facsimile +64 4 472 9822  
Email wellington@ap.aurecongroup.com

A person using Aurecon drawings and other data accepts the risk of:  
1. using the drawings and other data in electronic form without requesting and checking them for accuracy against the original hard copy versions;  
2. using the drawings or other data for any purpose not agreed to in writing by Aurecon.

Client: **Absolutely POSITIVELY Wellington**  
Mc HAKE NI PŌNEKE WELLINGTON CITY COUNCIL

Project: **KIO ROAD STORMWATER AND SEWER RELAY**

Date: 05.04.11  
Drawing Title: **NEW STORMWATER AND SEWER ALIGNMENT SHEET 3 OF 4**

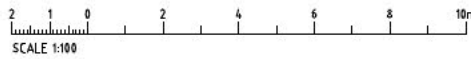
CW Project No. **206283**  
Scale: 1:100 @ A1, 1:200 @ A3  
Drawing No. **C003** Rev. **B**

ASBUILT

C:\File Path\ASBUILT\206283-20-C-100.dwg Plot Date: 04/04/11 11:41 From: \\WELL-SV-FUN\WELL-SV-FUN\WELL-SV-FUN\ASBUILT\206283-20-C-100.dwg Plot Date: 04/04/11 11:41 From: \\WELL-SV-FUN\WELL-SV-FUN\WELL-SV-FUN\ASBUILT\206283-20-C-100.dwg

NOTES:

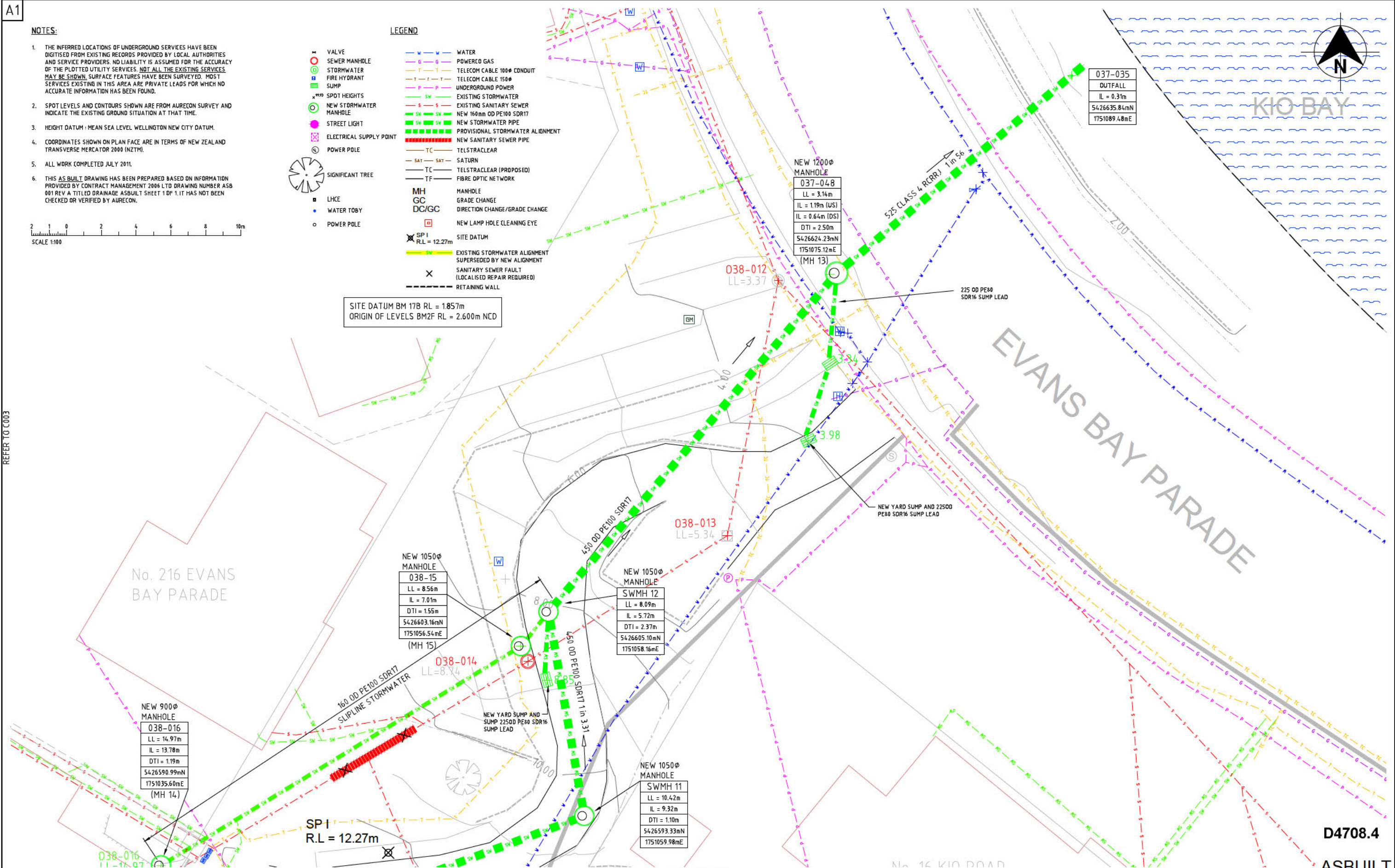
1. THE INFERRED LOCATIONS OF UNDERGROUND SERVICES HAVE BEEN DIGITISED FROM EXISTING RECORDS PROVIDED BY LOCAL AUTHORITIES AND SERVICE PROVIDERS. NO LIABILITY IS ASSUMED FOR THE ACCURACY OF THE PLOTTED UTILITY SERVICES. NOT ALL THE EXISTING SERVICES MAY BE SHOWN. SURFACE FEATURES HAVE BEEN SURVEYED. MOST SERVICES EXISTING IN THIS AREA ARE PRIVATE LEADS FOR WHICH NO ACCURATE INFORMATION HAS BEEN FOUND.
2. SPOT LEVELS AND CONTOURS SHOWN ARE FROM AURECON SURVEY AND INDICATE THE EXISTING GROUND SITUATION AT THAT TIME.
3. HEIGHT DATUM: MEAN SEA LEVEL WELLINGTON NEW CITY DATUM.
4. COORDINATES SHOWN ON PLAN FACE ARE IN TERMS OF NEW ZEALAND TRANSVERSE MERCATOR 2000 (NZTM).
5. ALL WORK COMPLETED JULY 2011.
6. THIS AS BUILT DRAWING HAS BEEN PREPARED BASED ON INFORMATION PROVIDED BY CONTRACT MANAGEMENT 2006 LTD DRAWING NUMBER ASB 001 REV A TITLED DRAINAGE ASBUILT SHEET 1 OF 1. IT HAS NOT BEEN CHECKED OR VERIFIED BY AURECON.



LEGEND

- VALVE
- SEWER MANHOLE
- STORMWATER MANHOLE
- FIRE HYDRANT
- SUMP
- SPOT HEIGHTS
- NEW STORMWATER MANHOLE
- STREET LIGHT
- ELECTRICAL SUPPLY POINT
- POWER POLE
- SIGNIFICANT TREE
- LHCE
- WATER TOBY
- POWER POLE
- WATER
- POWER/GAS
- TELECOM CABLE 100# CONDUIT
- TELECOM CABLE 150#
- UNDERGROUND POWER
- EXISTING STORMWATER
- EXISTING SANITARY SEWER
- NEW 160mm OD PE100 SDR17
- NEW STORMWATER PIPE
- PROVISIONAL STORMWATER ALIGNMENT
- NEW SANITARY SEWER PIPE
- TELSTRACLEAR
- SATURN
- TELSTRACLEAR (PROPOSED)
- FIBRE OPTIC NETWORK
- MANHOLE
- GRADE CHANGE
- DIRECTION CHANGE/GRADE CHANGE
- NEW LAMP HOLE CLEANING EYE
- SITE DATUM
- EXISTING STORMWATER ALIGNMENT SUPERSEDED BY NEW ALIGNMENT
- SANITARY SEWER FAULT (LOCALISED REPAIR REQUIRED)
- RETAINING WALL

SITE DATUM BM 17B RL = 1.857m  
ORIGIN OF LEVELS BM2F RL = 2.600m NCD



REFER TO C003

REFER TO C003

Rev.	Date	Revision Details	By	Ver.	App.
B	20.01.12	ISSUE FOR ASBUILT PURPOSES			
A	05.04.11	ISSUE FOR CONSTRUCTION			

**aurecon**  
Aurecon New Zealand Limited  
Old Bank Chambers  
102 Customhouse Quay (PO Box 1501)  
Wellington New Zealand  
Telephone +64 4 472 9589  
Facsimile +64 4 472 9822  
Email wellington@ap.aurecongroup.com

A person using Aurecon drawings and other data accepts the risk of:  
1. using the drawings and other data in electronic form without requesting and checking them for accuracy against the original hard copy versions;  
2. using the drawings or other data for any purpose not agreed to be written by Aurecon.

Client: **Absolutely POSITIVELY Wellington**  
ME HAKE KI PŌNEKE WELLINGTON CITY COUNCIL

Project: **KIO ROAD STORMWATER AND SEWER RELAY**

Date	05.04.11
Date	05.04.11
Date	05.04.11
Date	05.04.11

Drawing Title: **NEW STORMWATER ALIGNMENT SHEET 4 OF 4**

CW Project No.	206283
Scale	1:100 @ A1 1:200 @ A3
Drawing No.	C004
Rev.	B

C:\File Path\BIBS\CAD\CHILDRS\3003-20-C-004.dwg Plot Date: 24/11/2011 11:41:11 User: WISBUREN\PROJECTS\DRIFTING\CAD\BIBS\3003-20-C-004.dwg Plot Date: 24/11/2011 11:41:11 User: WISBUREN\PROJECTS\DRIFTING\CAD\BIBS\3003-20-C-004.dwg